

Pathways to Global Giving

Giving platforms for Australians
wanting to invest internationally

Edition 2



CONTENTS

Executive Summary	03
The International Giving Structure	04
Action on Poverty	05
Entrust	06
Global Development Group	07
Just Peoples	08
Move92	09
Myriad Australia	10
Partners for Equity	11
Taylor Foundation	12
The Life You Can Save	13
World Relief Australia	14

AIDN's "Pathways to Global Giving" eBooklet serves as a resource for Australians seeking to engage in international giving. This eBooklet offers an overview of the international giving landscape, addressing key aspects of the giving structures and shedding light on the available platforms. Targeted at individuals eager to contribute funds overseas but uncertain about the offshore giving landscape and tax deductibility options, the eBooklet covers profiles of approved channels or "giving platforms".

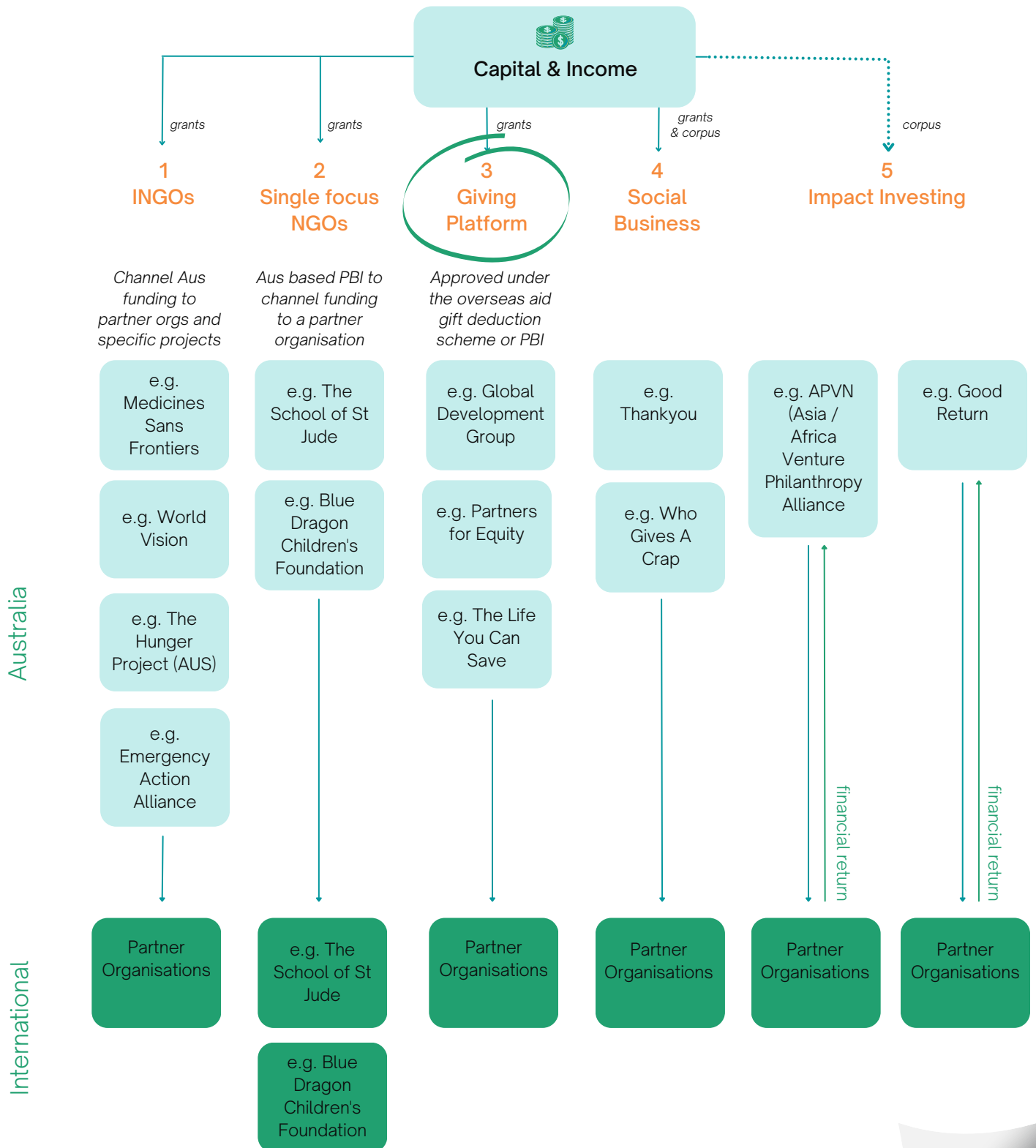
Giving platforms are channels for Australians to give internationally that are approved under the Overseas Aid and Gift Deduction (OAGD) scheme or Public Benevolent Institutions (PBI). Typically, giving platforms are a conduit between donors and multiple on-the-ground programs abroad - as opposed to a donor supporting one international organisation. Giving platforms will often include a range of partners abroad for the donor to choose from, alongside providing important information about each program. Australians can only claim a tax deduction for donations to organisations that have the status of Deductible Gift Recipient (DGRs). Each of the pathways listed in the booklet have DGR status either through the OAGD scheme or endorsed as a PBI. For every giving platform that is profiled in this booklet, you will get a sense of their programmatic and geographic focus, fee structure and scope of portfolio.

With a focus on facilitating informed decision-making, AIDN's eBooklet empowers potential donors with the knowledge needed to make impactful contributions overseas.

Executive Summary

The below graph offers a snapshot of the channels to giving internationally. This booklet focuses on the organisations that are part of **3. Giving Platforms**.

Australian channels to international philanthropy, and particularly, for PAFs requiring DGR Type 1, have opened to be in line with PBI * Legislation



*Public Benevolent Institutions (PBI) provide support to communities in necessitous circumstances

**These general platforms also coordinate and fund their own programs

Action on Poverty is the trusted partner for changemakers creating a better world. With over 50 years of international development experience combined with grassroots networks globally, we help everyone take effective action on poverty.

Action on Poverty is your guide to more effective and transformative giving. We support you to develop an effective program. We work closely with our clients and partners to explore values, maximise resources, co-design, assess and manage risk, develop impact measurement systems, provide accountability, connect with vetted local partners, provide additional grants, and ultimately achieve greater impact at lower cost than working alone.

Fees range from 0-20% depending on size and complexity of the program, whether we're working with new or existing partners, and risk and cost of the location. We also offer grants back into eligible programs. Our team will work with you to assess the need and develop a customised costing plan.



Number of partners within portfolio:

36



Geographic focus:

n/a



Programmatic focus:

n/a

[Carrie Cochrane, Head of Partnerships:](mailto:Carrie.Cochrane@actiononpoverty.org)
Carrie.Cochrane@actiononpoverty.org

Brayden Howie, CEO:
brayden.howie@actiononpoverty.org

actiononpoverty.org

Action on Poverty

Entrust exists to enable hope in the world's hardest places. We long to see life-change for the poor and oppressed in East Africa, India and Asia. We partner with over 50 local overseas organisations and have identified 60 projects that meet our funding criteria. 100% of money donated through Entrust is given to the people on the ground who need it most. We know that because before your money goes there, we do! We connect regularly with, visit, and complete our due diligence on each of the 60+ projects we manage across 12 countries. We specialise in Water & Sanitation, Education, Economic Empowerment, and combatting Human Trafficking. We offer DGR1 tax deductibility.

100% of donated funds get to the village. Our overheads are funded from our own invested capital.

entrust foundation



**Number of
partners within
portfolio:**

55



**Geographic
focus:**

**East Africa
India
Asia**



**Programatic
focus:**

**Water & Sanitation,
Education
Economic Empowerment
Human Trafficking**

Nikki Capp, CEO
nikki@entrust.org.au
 +61 (0)418 532 451
www.entrust.org.au

Entrust

Global Development Group is focused on creating a world where people live free of poverty with the opportunity and the ability to shape their own lives.

GDG's partnership model is based on shared values and a passion to make a difference. It is an effective approach that leverages the strengths of each partner while maintaining collaboration and transparency. Through a small-scale, grassroots approach our development projects are implemented in consultation with the local beneficiary community to identify the needs they want to address, utilising their existing resources, knowledge, skills and materials.

Our model enables supporters from Australia, New Zealand, USA and the UK [Gift aid] to make tax effective donations to GDG aid & development projects that they are passionate about, connecting the giving community with community-based implementing organisations in developing countries. Donors can choose to support an existing project, explore developing a new project with an existing partner, or submit a new project with an entirely new partner for consideration.

Our services include project oversight, governance, DFAT and ACNC compliance, support in project design, monitoring and evaluation, receipting tax-deductible donations, promotional compliance, access to online giving platforms, fundraising support, assistance in policy and procedure development, and facilitation of in-country partner networking and collaboration. Additionally, we handle international funds disbursement.



Number of partners within portfolio:

200+



Geographic focus:

Africa, SE Asia, Asia, India region, Americas, Middle East, Pacific



Programmatic focus:

holistic grassroots poverty alleviation

David Pearson, CEO
david@globaldevelopment.org.au

www.gdg.org.au

Global Development Group

Just Peoples gives Australians and Kiwis the opportunity to directly fund locally-led organisations across East Africa and Asia that are tackling poverty in their communities, ensuring that the impact supported is culturally appropriate, sustainable and cost effective.

Givers can back their choice of 16 locally-led organisations with unrestricted funding or choose from a range of specific projects to support which require between \$500 and \$60,000 to bring to life.

Australians and Kiwis who are passionate about supporting locally-led change initiatives are invited to join Just Peoples in one of their regular Zoom events where they'll have the opportunity to connect directly with a range of local leaders and find aligned organisations and projects to support.

Just Peoples offers tax deductibility to Australian and Kiwi tax payers and retains a maximum of 12.5% of each grant to cover the costs of grant administration, governance, reporting and compliance with the ACNC External Conduct Standards.



Number of partners within portfolio:

16



Geographic focus:

**Asia
East Africa**



Programatic focus:

**education, healthcare
clean water; business
skills training, start-up
capital and
microfinance; women's
initiatives.**

Johanna de Burca
jo@justpeoples.org
0474 977 140

<https://www.justpeoples.org/>

Just Peoples

At Move92 our ultimate aim is to get more girls and women access to education and opportunities for leadership positions. We work with over 40 trusted organisations in 13 countries and everything we fund is 100% community-driven ideas and innovation. We do this by inspiring grantmakers to give direct, unrestricted funding directly to in-country organizations. We ensure the community is designing, implementing and leading the solutions unique to their nuanced cultural needs. And we are seeing tremendous outcomes. Reproductive health designed by and for youth in Burkina Faso, on-site childcare so mothers can attend STEM courses in Kenya, girls attending University then returning to Sri Lanka to create generation change in their communities, a podcast to give a voice for women peacebuilders in Indonesia.

As humans living on our one Earth we are experiencing the shared struggles of a climate crisis and seemingly endless wars around race, borders and religion. Our news feeds are hard to watch, but impossible to look away from. We also know there is so much beauty happening around the world. And we know that getting more girls and women into leadership positions globally is one way we can begin to mitigate some of these interconnected challenges.

Our grants range from \$5K- \$10K and we work with grantmakers in the US, Australia, New Zealand, Singapore and Thailand. We have a transparent 13% fee per grant to help cover the costs of running our organisation and building and maintaining our global network of grantmakers and partners.



Number of partners within portfolio:

42



Geographic focus:

global



Programatic focus:

Girls and women's leadership, technology, maternal and child health, asylum seekers and refugees, environment

Geneva Pritchard, Executive Director
geneva@move92.org
+64 2108361179
www.move92.org

Move92

Myriad Australia (formerly known as Give2Asia Australia) provides donors with a simple and efficient platform to support nonprofit initiatives overseas, anywhere across the globe. We are dedicated to unlocking the full potential of international philanthropy in Australia. Our mission is to strengthen communities around the world by making cross-border giving easier and more effective.

As a founding partner of Myriad, the Alliance for borderless giving, Myriad Australia offers a single entry point for donors seeking to support causes anywhere in the world. We connect corporates, philanthropists, trusts and foundations to locally-led organisations. Donors can rely on Myriad Australia's regional and global network to conduct due diligence checks, navigate international regulations and manage grantee partnerships across multiple geographies.

Myriad Australia offers tailored, flexible solutions to make international giving seamless. We work with donors to make a lasting impact and ensure support reaches the right communities – no matter where they are in the world. Our cause-agnostic approach, combined with the versatility of our Donor-Advised Fund, allows donors to manage their charitable giving efficiently, without limitations.

In addition to the suite of donor services, Myriad Australia provides auspice arrangements to eligible overseas nonprofits seeking to fundraise and receive tax-deductible donations in Australia.

Myriad Australia is a registered Deductible Gift Recipient (DGR1) charitable organisation based in Melbourne.



Number of partners within portfolio:

over 2,000



Geographic focus:

Global



Programmatic focus:

**cause-agnostic
dedicated to
alleviating poverty**

Anita Toy, Executive Director

anita@myriadaustralia.org

03 7036 7843

https://www.myriadaustralia.org_

Myriad Australia

PFE partners with non-government, community-based organisations in developing countries to provide aid to communities that are disadvantaged or living in poverty. Prior to Covid (and hopefully going forward), collectively PFE directors and staff spent many months each year visiting our partners and potential partners, undertaking due diligence, and viewing their programs firsthand.

PFE is sector agnostic but traditionally has provided grants primarily in the health, education, and livelihoods sectors. Most of our partners are working in Africa, South-east Asia, or the Indian Sub-Continent (excluding India).

We are particularly proud of our Local Leaders' Portfolio. This has been an initiative of the last 3 years where we have identified grassroots organisations in Africa, founded by local leaders, supported them financially, and provided capacity building (at their request) in communications, marketing, strategy, and monitoring/evaluation. We have seen enormous growth in, and impact by, these organisations over that time.

We are happy to accept donations for our partners from Australians (subject to our minimum donation amount of A\$10,000) and provide a tax-deductible receipt (Item 1 DGR).

PFE's costs are covered by its founders and directors so 100% of donations are passed through to our partners.



Number of partners within portfolio:

approx. 60



Geographic focus:

Africa, South-east Asia, or the Indian Sub-Continent (excluding India)



Programatic focus:

health, education, and livelihoods

Linda Fox, Chief Executive Officer
linda@partnersforequity.org

www.partnersforequity.org

Partners for Equity

Philanthropy Advisory:

Our small, nimble and effective team provides highly personalised advisory services, **free of charge**, drawn from decades of experience. Our team have founded organisations, lived on ground in developing countries, established and operated PAFs, DGR1's and 501c3s. They have created partnership with multinational organisations and understand international development from all possible angles, from programmatic through to legal. Our services include exploratory and planning sessions, desk-based and on-ground research, grant application processes, tailored funding recommendations, experienced-based program consulting, grant reporting and ongoing due diligence. After identifying existing or new project options that align with your needs, we'll ensure that your philanthropic journey is a fulfilling one, meeting your goals whilst offering you the opportunity for direct, authentic connection with those you are uplifting.

The Enable Fund:

We offer you the opportunity to give through our tax-deductible global giving platform, set up by the Taylor Foundation to avoid bottlenecks, bureaucracy and overly isolated giving. We facilitate the pooling of collective giving for greater social impact, **where 100% goes directly to the projects you choose to support around the world. Why do we do this for free?** We want to encourage international giving and link amazing projects to amazing funders.

NADIA + ALF TAYLOR FOUNDATION



Number of
partners within
portfolio:

150



Geographic
focus:

Africa, Asia Pacific
and Latin America



Programatic
focus:

Education,
social enterprise
and healthcare

Claire Pryce (COO)

claire.pryce@taylor-foundation.org

Claire: +27 83 891 6188

David Everett (Aus): +61 431 435 781

www.taylor-foundation.org

Taylor Foundation

The Life You Can Save was founded by Melbourne-born Peter Singer, widely recognised as one of the world's most influential contemporary philosophers, to advance the ideas in his book *The Life You Can Save: Acting Now to End World Poverty*. In the book, Peter argues that if we can provide immense benefit to someone at minimal cost to ourselves, we should do so.

The organisation now works to inspire and enable people to give more to effective charities. They provide free access to Peter's book - including an audiobook read by Stephen Fry, Kristen Bell, Paul Simon and more - and a list of cost-effective charities aiming to save and improve as many lives as possible per dollar. Their new in-house charity evaluation team, led by Katie Stanford, is currently working on expanding its list of recommended organisations.

The Life You Can Save Australia is a registered Deductible Gift Recipient (DGR1). They do not charge fees on donations designated for their recommended charities.



Number of partners within portfolio:

24



Geographic focus:

Africa
Asia



Programatic focus:

-

Louise Pfeiffer

louise.pfeiffer@thelifeyou cansave.org

www.thelifeyou cansave.org.au/

The Life You Can Save

World Relief Australia (WRA) is an Australian based aid and development agency, with tax deductibility under the OAGDS scheme, which exists to encourage, support and build partnering relationships between self-help community groups in Australia and partner groups in developing countries.

The core focus of WRA is on empowering those with passion to serve those in need.

WRA provides a framework for Australian based development groups to partner with in-country development groups in developing countries across the Asia Pacific and Africa. WRA is committed to good development practice in supporting engagement between partners in Australia and overseas. A spirit of mutual accountability based on trust and respect underpins the operations of WRA.

Donations to projects supported under the WRA framework are tax-deductible. WRA's fees range between 6.5%-10% related to the range of supports and services provided.



Number of partners within portfolio:

50



Geographic focus:

n/a



Programmatic focus:

n/a

Don Van Cooten, CEO
(07) 3112 7851

www.wra.org.au

World Relief Australia

The Australian International Development Network

www.aidnetwork.org.au

If your organisation would like inclusion in this booklet,
please contact Emily Umbers at the Australian International
Development Network at emily@aidnetwork.org.au

