

Pathways to Global Giving

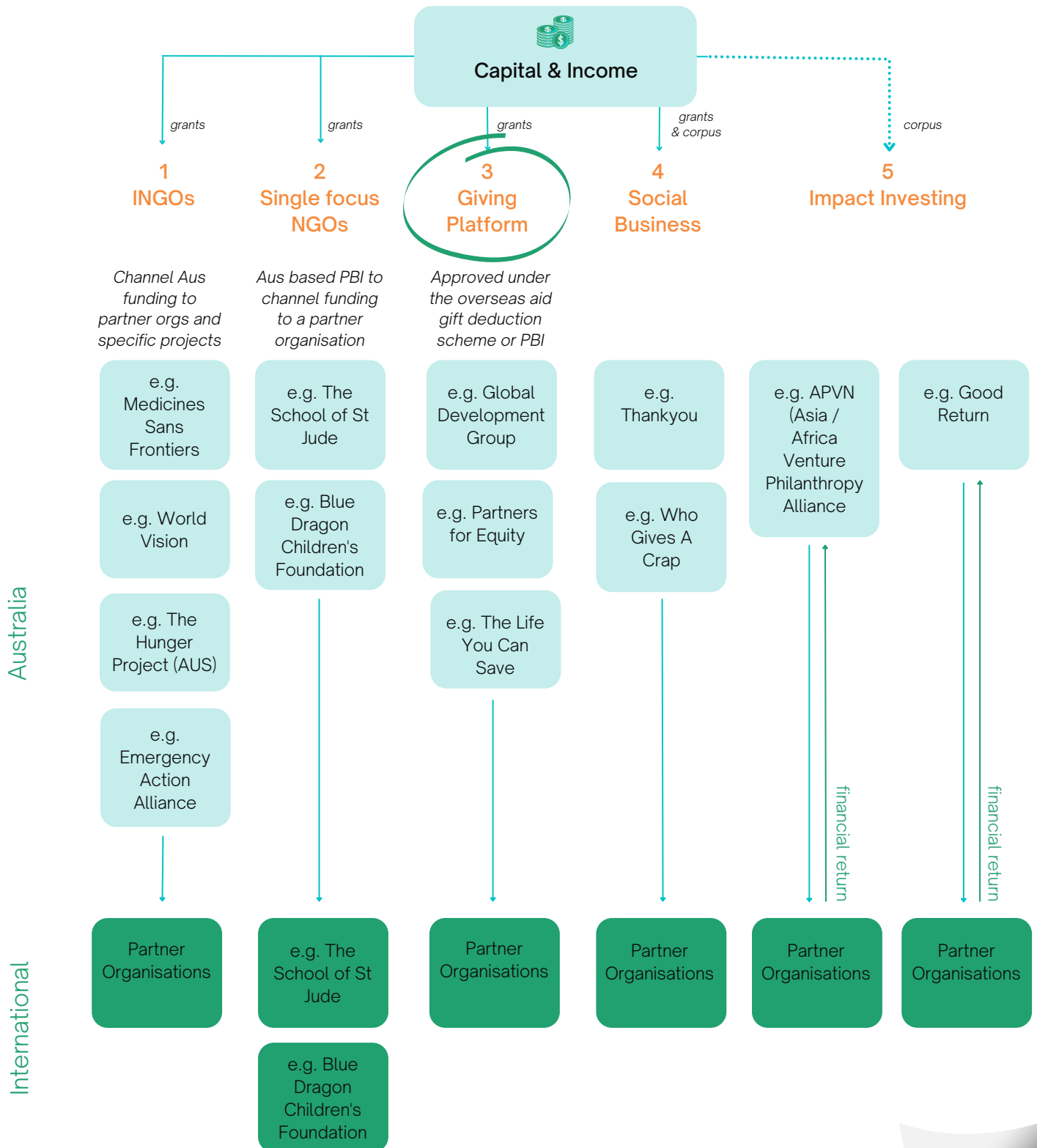
Giving platforms for Australians
wanting to invest internationally

CONTENTS

The International Giving Structure	03
Action on Poverty	04
Entrust	05
Give2Asia	06
Global Development Group	07
Just Peoples	08
Move92	09
Partners for Equity	10
The Life You Can Save	11
World Relief Australia	12

The below graph offers a snapshot of the channels to giving internationally. This booklet focuses on the organisations that are part of **3. Giving Platforms**.

Australian channels to international philanthropy, and particularly, for PAFs requiring DGR Type 1, have opened to be in line with PBI * Legislation



*Public Benevolent Institutions (PBI) provide support to communities in necessitous circumstances

**These general platforms also coordinate and fund their own programs

Action on Poverty is the trusted partner for changemakers creating a better world. With over 50 years of international development experience combined with grassroots networks globally, we help everyone take effective action on poverty.

Action on Poverty is your guide to more effective and transformative giving. We support you to develop an effective program. We work closely with our clients and partners to explore values, maximise resources, co-design, assess and manage risk, develop impact measurement systems, provide accountability, connect with vetted local partners, provide additional grants, and ultimately achieve greater impact at lower cost than working alone.

Fees range from 0-20% depending on size and complexity of the program, whether we're working with new or existing partners, and risk and cost of the location. We also offer grants back into eligible programs. Our team will work with you to assess the need and develop a customised costing plan.



Number of partners within portfolio:

36



Geographic focus:

n/a



Programmatic focus:

n/a

[Carrie Cochrane, Head of Partnerships:](#)
Carrie.Cochrane@actiononpoverty.org

Brayden Howie, CEO:
brayden.howie@actiononpoverty.org

actiononpoverty.org

Action on Poverty

Entrust exists to enable hope in the world's hardest places. We long to see life-change for the poor and oppressed in East Africa, India and Asia. We partner with over 50 local overseas organisations and have identified 60 projects that meet our funding criteria. 100% of money donated through Entrust is given to the people on the ground who need it most. We know that because before your money goes there, we do! We connect regularly with, visit, and complete our due diligence on each of the 60+ projects we manage across 12 countries. We specialise in Water & Sanitation, Education for the poorest, Economic Empowerment for the poor and combat Human Trafficking. We offer DGR1 tax deductibility.

100% of donated funds get to the village. Our overheads are funded from our own invested capital.

entrust foundation



Number of partners within portfolio:

52



Geographic focus:

**East Africa
India
Asia**



Programatic focus:

**Water & Sanitation,
Education
Economic Empowerment
Human Trafficking**

Richard Beaumont
richard@entrust.org.au
0404 458 810

www.entrust.org.au

Entrust

Give2Asia enables Australian donors to give across borders. We connect corporates, philanthropists, and foundations with locally run charities across Asia. Our mission is to alleviate poverty and strengthen communities in Asia by making international giving easier and more effective.

Give2Asia is a founding partner of Myriad, the alliance for borderless giving. Through this alliance, donors across 4 continents can support charities in over 100 countries.

Give2Asia is a registered Deductible Gift Recipient (DGR1) charitable organisation based in Melbourne. Since 2001, the global Give2Asia network has facilitated more than US\$420 million of charitable grants across 23 countries.

Give2Asia's fee structure is standardised across the globe and varies depending on grant size. This is used to support ongoing compliance and grant administration efforts.

For new charity partners to the Give2Asia network, one-off cost to cover due diligence is \$2,000 with free annual recertification after onboarding.



Number of partners within portfolio:

over 1,500



Geographic focus:

**Asia
(plus Africa, Europe
and North America
through the Myriad
Alliance)**



Programmatic focus:

poverty alleviation

Anita Toy
atoy@give2asia.org

<https://give2asia.org/australia/>

Give2Asia

Global Development Group (GDG) helps you give to your passion.

Imagine a world where people live free of poverty with the opportunity and the ability to shape their own lives.

Part of the GDG global network, GDG is an Australian Item 1 PBI and OAGDS DGR based in Brisbane.

Donors can choose to support an existing project, explore developing a new project with an existing partner, or submit a new project with an entirely new partner for consideration.

GDG has a project cost of 7.5% which covers governance, project management, monitoring and evaluation, reporting, compliance, including covering the ACNC External Conduct Standards and ACFID Code of Conduct compliance. There are no other hidden costs or fees.

Over 20 years, GDG has raised over \$386M, operating a successful partnership model that values effectiveness, efficiency, and accountability in the delivery of quality aid and development projects around the world. It's a partnership based on shared values and a passion to make a difference. We believe in connecting the giving community with community-based implementing organisations in over 37 developing countries. And it works. Satisfied project partners means that we've grown by word-of-mouth as they share our strengths of flexibility and timeliness.



Number of partners within portfolio:

200+



Geographic focus:

Africa, SE Asia, Asia, India region, Americas, Middle East, Pacific



Programmatic focus:

holistic grass-roots poverty alleviation

+61 7 3341 6475
info@globaldevelopment.org.au

www.gdg.org.au

Global Development Group

Just Peoples connects Australians directly to grassroots projects overseas which tackle poverty. Each project is designed by a local project leader from Asia, Africa or Central America to meet a specific need in their community and requires between \$500 and \$30,000 to bring to life. Australians who'd like to donate to a project overseas are invited to join Just Peoples in one of their monthly Conversations and Connections Zoom events where they'll have the opportunity to meet 1-2-1 with 10 project leaders from around the world to find a project to support that meets their unique goals of contribution.

Just Peoples retains a maximum of 12.5% of each project donation in Australia to cover the costs of running the organisation and building and managing relationships with Australian supporters. A minimum of 87.5% of each project donation is delivered directly to cover the in-country costs of project implementation.



	Number of partners within portfolio:	15
	Geographic focus:	Asia East Africa Mexico
	Programatic focus:	education, healthcare clean water; business skills training, start-up capital and microfinance; women's initiatives.

Johanna de Burca
jo@justpeoples.org
0474 977 140

<https://www.justpeoples.org/>

Just Peoples

Move92 is a team of philanthropic advisors that focus on curating relationships between philanthropists and local, grassroots organizations around the world. Collectively we have over 80 years of experience in the international development sector. Our team members have diverse backgrounds and have worked with large aid organizations, lived amongst communities, speak numerous languages, worked for private sector consultancy firms and managed private philanthropic funds. Our formal education and lived experience has led us to believe strongly that direct, flexible funding to local leaders is the most effective way to create lasting change in communities.

Our team walks you through the emerging paradigm shift of trust-based philanthropy, what it means, why it is important, and how it can be done to ensure trust is at the forefront of the relationships and the grants. Then we help design your personal philanthropic goals and dreams – and use this information to introduce you to organizations doing innovative work in a region or specific topic you are interested in.



Number of partners within portfolio:

32



Geographic focus:

global



Programatic focus:

Girls and women's leadership, technology, maternal and child health, asylum seekers and refugees, environment

Geneva Pritchard, Executive Director

geneva@move92.org

+64 2108361179

www.move92.org

Move92

PFE partners with non-government, community-based organisations in developing countries to provide aid to communities that are disadvantaged or living in poverty. Prior to Covid (and hopefully going forward), collectively PFE directors and staff spent many months each year visiting our partners and potential partners, undertaking due diligence, and viewing their programs firsthand.

PFE is sector agnostic but traditionally has provided grants primarily in the health, education, and livelihoods sectors. Most of our partners are working in Africa, South-east Asia, or the Indian Sub-Continent (excluding India).

We are particularly proud of our Local Leaders' Portfolio. This has been an initiative of the last 3 years where we have identified grassroots organisations in Africa, founded by local leaders, supported them financially, and provided capacity building (at their request) in communications, marketing, strategy, and monitoring/evaluation. We have seen enormous growth in, and impact by, these organisations over that time.

We are happy to accept donations for our partners from Australians (subject to our minimum donation amount of A\$10,000) and provide a tax-deductible receipt (Item 1 DGR).

PFE's costs are covered by its founders and directors so 100% of donations are passed through to our partners.



Number of partners within portfolio:

approx. 60



Geographic focus:

Africa, South-east Asia, or the Indian Sub-Continent (excluding India)



Programatic focus:

health, education, and livelihoods

Linda Fox, Chief Executive Officer
linda@partnersforequity.org

www.partnersforequity.org

Partners for Equity

The Life You Can Save was founded by Melbourne-born [Peter Singer](#), widely recognised as one of the world's most influential contemporary philosophers, to advance the ideas in his book *The Life You Can Save: Acting Now to End World Poverty*. In the book, Peter argues that if we can provide immense benefit to someone at minimal cost to ourselves, we should do so.

The organisation now works to inspire and enable people to give more to effective charities. They provide [free access](#) to Peter's book - including an audiobook read by Stephen Fry, Kristen Bell, Paul Simon and more - and [a list of cost-effective charities](#) aiming to save and improve as many lives as possible per dollar. Their new in-house charity evaluation team, led by Bilal Siddiqi, is currently working on expanding its list of recommended organisations.

The Life You Can Save Australia is a registered Deductible Gift Recipient (DGR1). They do not charge fees on donations designated for their recommended charities.



Number of partners within portfolio:

20



Geographic focus:

Africa
Asia



Programatic focus:

-

[Rickard Vikstrom](#)

rickard.vikstrom@thelifeyoucansave.org

www.thelifeyoucansave.org.au/

The Life You Can Save

World Relief Australia (WRA) is an Australian based aid and development agency, with tax deductibility under the OAGDS scheme, which exists to encourage, support and build partnering relationships between self-help community groups in Australia and partner groups in developing countries.

The core focus of WRA is on empowering those with passion to serve those in need.

WRA provides a framework for Australian based development groups to partner with in-country development groups in developing countries across the Asia Pacific and Africa. WRA is committed to good development practice in supporting engagement between partners in Australia and overseas. A spirit of mutual accountability based on trust and respect underpins the operations of WRA.

Donations to projects supported under the WRA framework are tax-deductible. WRA's fees range between 6.5%-10% related to the range of supports and services provided.



Number of partners within portfolio:

50



Geographic focus:

n/a



Programmatic focus:

n/a

Don Van Cooten, CEO
(07) 3112 7851

www.wra.org.au

World Relief Australia

The Australian International Development Network

www.aidnetwork.org.au

If your organisation would like inclusion in this booklet,
please contact Emily Umbers at the Australian International
Development Network at emily@aidnetwork.org.au

